



PRODUCT  
PROCESS  
MISSION

COMMITTED TO A  
GREEN HERITAGE

**SAGE**  
Automotive Interiors

## A GLOBAL COMPANY COMMITTED TO SUSTAINABILITY

Sustainability isn't just our manufacturing trend—it's our heritage. What began as a company conviction has grown into renewable designs, earth-friendly business practices and a responsibility that has completely transformed how we do business. We work hard to develop the most advanced alternative resource solutions to reduce our global footprint.

### WE APPROACH SUSTAINABILITY IN THREE WAYS:



**PRODUCT**



**PROCESS**



**MISSION**



# THE PIONEERS

SAGE CREATES SUSTAINABLE PRODUCT

Sage Automotive Interiors began with the environment and community in mind. We work to provide sustainable products that meet our clients' needs on the OEM level, and we are a forerunner for sustainability in the industry.

SAGE AUTOMOTIVE  
INTERIORS EST.

- 1999 ○ Roger Milliken creates The Noble Tree Foundation, promoting the ecological value of trees
- 2009 ○ Milliken becomes Carbon Negative
- 2009 ○ We were the first company to have a fully closed-loop process at the fiber stage
- 2010 ○ Among the first to adopt post-industrial and post-consumer polyester and had a 13.4% utilization rate of recycled fiber
- 2012 ○ We were the first to work with Unifi's REPVEVE® and Ford to create the 100% recycled and electric 2012 Ford Focus
- 2013 ○ First company to supply recycled yarn on a global program in multiple countries (NA, EU, China) in the Ford Fusion
- 2015 ○ Added recycled suede product (Dinamica®) to the product portfolio
- 2017 ○ Built brand-new sustainable finishing plant in Prato, Italy
- 2020 ○ Fiat/Seaqual partnership



## SAGE COMMITMENTS

1

PRESERVING OUR NATURAL RESOURCES

2

SECURING FINANCIAL SUCCESS FOR OUR COMPANY

3

ENSURING LIFE SUCCESS FOR OUR ASSOCIATES  
AND COMMUNITIES



# THE BRANDS



Dinamica® is a microfibre suede. The recycled polyester contained in the microfibre derives mainly from polyester fibres (industrial waste). Recycled content ranges from 30%-73% depending on the article. Its unique versatility, transformative performance and luxurious quality make Dinamica suitable for a variety of applications: seat, back, headrest, armrest, dashboard, rear parcel shelf, door panels, headliner, pillars, and sun visor.



Use of non-toxic neutral dyes



1 megawatt photovoltaic solar plants



Up to 30%-73% recycled material used for products



Internal water recirculation systems



# THE BRANDS

**NEXX**  
ESSENTIALS™

NEXXEssentials™ is a forward-thinking mobility interiors platform that brings innovative, safe and functional technologies to the interior and elevates the mobility experience.

NEXXEssentials allows complete customization for each vehicle, while maintaining safety, functions and comfort that elevate your mobility interior. You can choose the performance and smart features you need to enhance your vehicle's appearance and performance.



Highly effective stain release



Improved air quality and odor elimination



Anti-microbial properties



Water resistance



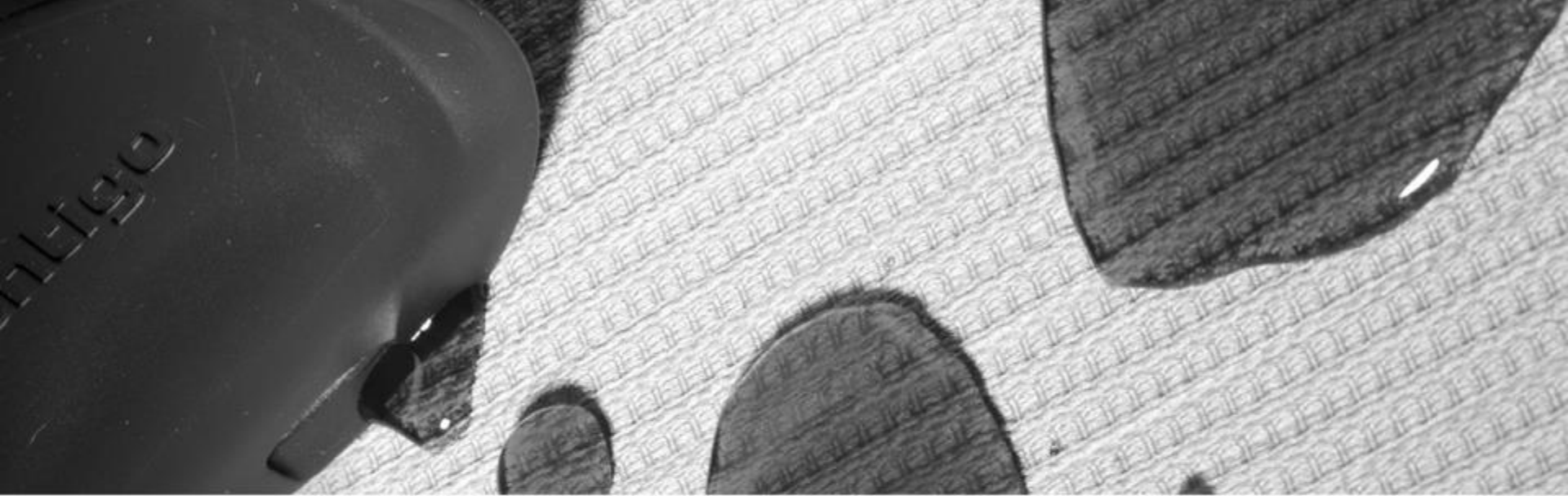
Advanced anti-static properties



NVT 47

SAGE CREATES SUSTAINABLE PRODUCT

# INNOVATIVE, CONVENIENT, STYLISH



**NO STAINS,  
NO SMELLS,  
NO WORRIES.®**







# EARTH-FRIENDLY YARN OPTIONS

SAGE CREATES SUSTAINABLE PRODUCT

Sage produces several types of yarn options that enhance the ability to create sustainable fabrics.  
Earth-friendly yarn options include:



## POST-CONSUMER YARNS

made from recycled bottles



## POST-INDUSTRIAL YARNS

made from many sources of industrial polyester that have not been sold to the end consumer



## OCEAN-CLEAN YARNS

protect our waterways and oceans by preventing and removing plastics

there are two ways this is achieved:

1. removing: plastic bottles from our oceans
2. preventing: ocean bound plastic bottles



## BIO BASED YARNS

30% content from Bio-MEG and replaces petroleum-based products



## TAPE WEAVING

utilizes innovative sustainable tape materials woven with traditional Italian technology that create a high-quality handcrafted-look material



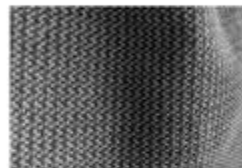
## POLYWOOL

up to 30% wool content, high-quality eco-fabric that is thermo-regulated and anti-static



## NON-WOVEN PET FOAM REPLACEMENT

made with post-consumer yarn, this knit construction offers a higher loft and good cushioning properties. Product is recyclable at end of life.







# SUSTAINABILITY ACROSS THE GLOBE

With over 30 corporate and partner locations across the globe, there are endless opportunities for growth and success at Sage Automotive Interiors. Getting to know a few of the plants will lead to an understanding of the global impact that Sage's sustainability measures make on our world.

Each plant and Sage as a global company strive to minimize the environmental impact of our work during the production process. Most items produced are used in the same region as the plant's location. This process allows regional design centers to customize their work based on local trends, all while reducing the environmental impact of freight transit and shipping. Sage achieves sustainable production by making green choices when they're available, like using non-toxic neutral dyes, relying on a 1-megawatt photovoltaic solar plant and using an internal water recirculation system.



# NORTH AMERICAN MANUFACTURING PLANTS

Each plant in the United States contributes greatly to the success and sustainability mission of Sage Automotive Interiors. They are unique, yet united in their purpose; to manufacture the highest quality automotive interiors in the industry while protecting the environment.



## **GAYLEY**

518 PUMPKINTOWN ROAD  
MARIETTA, SC 29661

## **AVALON**

1068 HISTORIC HWY. 17  
TOCCOA, GA 30577

## **SHARON**

1359 HIGHWAY 72 WEST  
ABBEVILLE, SC 29620

## **ABBEVILLE**

601 BROOKS STREET  
ABBEVILLE, SC 29620

## **COTTON BLOSSOM**

295 BROADCAST DRIVE  
SPARTANBURG, SC 29303

All of Sage's United States locations have achieved ISO 14001, which is the international standard for effective environmental management systems.

SAGE IS PROUD TO SAY  
THAT WE HAVE REACHED:

# ZERO

IMPACT WASTE TO LANDFILL

# 90%+

OF WASTE IS REUSED, RECYCLED, TURNED TO ENERGY

# 4,804

TOTAL TONS DIVERTED FROM NORTH AMERICAN PLANTS (2018)

SAGE CREATES SUSTAINABLE PROCESS



## WATER, ENERGY AND WASTE PROJECTS

Along the production cycle, Sage strives to lower the consumption of water and energy and reduce the amount of waste produced while still creating a product that outpaces the competitors.

**Abbeville** reduced afterscour on Dinamica® styles to lower water usage by 10,000 gallons/week. **Sharon** identified vendor to support reduce waste cost for shipping. **Cotton Blossom** upgraded 400-watt warehouse bay lights to LED lights to reduce energy usage in 9 bays.



SAGE CREATES SUSTAINABLE PRODUCT





## SUSTAINABILITY IN THE STATES

Sustainability isn't just our message, it's our movement. Each plant works day in and day out to reduce, reuse and recycle.

\$9,022

SHARON

\$105,889

AVALON

\$9,509

ABBEVILLE

\$5,896

GAYLEY

**COST RECOVERED FROM ITEMS SOLD  
FOR REUSE/RECYCLE PER YEAR**



**OF WASTE DIVERTED  
FROM LANDFILL PER YEAR**

(2018)



# SUSTAINABILITY IN SOUTH AMERICA

SAGE CREATES SUSTAINABLE PROCESS

## BRAZIL

RODOVIA PRESIDENTE DUTRA, KM 201  
ARUJÁ, SÃO PAULO – SP – 07411-020

Sage Brazil leads our global manufacturing facilities with a record of 2,115+ days without a lost-time incident. In addition to our commitment to safety, we are always looking for innovative ways to increase our sustainable practices in manufacturing.

## WASTE WISE

*Total solid waste diverted from landfill in 2019:*

10,0 waste kg/produced fabrics kg

14,4 M<sup>3</sup> average per month organic waste destined to landfill

## CONSUMPTION CONSCIOUS

Energy consumption in 2019: 31,3 kWh/worked hours

Water consumption in 2019: 8,44 liters/Lm average per month



# SUSTAINABILITY IN SOUTH AMERICA

SAGE CREATES SUSTAINABLE PROCESS

## ENERGY EFFICIENT

Exchange of fluorescent lamps for LED lamps to save energy

Gradual factory powering-up avoids high electricity consumption

## SAFE AND SUSTAINABLE

IATF 16949: 2016 Certification (Quality Management System)

ISO: 14001

## SUSTAINABILITY STANDARDS

Reverse logistics of cleaning product packaging and chemical containers

Use recycled paper for sample cards

Sell 100% of the fabric waste for reuse and destine to co-process only the contaminated waste

Send oil waste to refining facility for reuse

85% of Sage Brazil production fabrics use 100% Virgin Polymer Solution-dyed yarns, which contribute to less impact on climate change, water depletion and other environmental aspects.



Printed on recycled paper from sources that have been independently certified for sustainability.



# SUSTAINABILITY IN EUROPE



## **SAGE AUTOMOTIVE INTERIORS, LTD.**

UL. PRZEMYSŁOWA 9  
68-200 ZARY, POLAND

## **MIKO SRL**

VIA RESSEL N. 3 - 34170  
GORIZIA, ITALY

## **APOLLO SRL**

VIA ALBERT EINSTEIN, 26  
50013 CAMPI BISENZIO (FI) ITALY







## SUSTAINABILITY IN POLAND



**422 TONS**

TOTAL SOLID WASTE DIVERTED FROM LANDFILL

**0.0194 TONS**

GREENHOUSE GAS EMISSIONS (CO<sub>2</sub>E METRIC TON/MPOUND)

**3,075,744 kWh**

ENERGY CONSUMPTION (KWH/POUND)

SAFETY STANDARD

**ISO IATF 16949:2016**

**ISO 14001**



# SUSTAINABILITY AT APOLLO

SAGE CREATES  
SUSTAINABLE  
PROCESS

The Apollo plant, completed in December 2017, is constantly striving to surpass safety standards and find innovative ways to increase sustainability.

## SAFETY

231 Compliance

SA 8000 Certification

Ongoing ISO 45001 Certification

## SUSTAINABILITY

Approved by CRS system

EcoVadis – Silver medal

ISO 14001

## SAVING POWER IN PRODUCTION

In addition to top-notch safety certifications and sustainability practices, the Apollo plant is saving power and water along the production line and in the laboratory.

- Reuses water as a coolant in the temperature and humidity conditioning systems
- Implements energy-saving systems with LED lighting for production areas and offices, VRF air conditioning for office building and compressor room control unit
- Utilizes a photovoltaic system of 108Kwp that covers 4% of the annual energy requirement





# SUSTAINABILITY AT APOLLO

## APOLLO'S DAILY SUSTAINABILITY EFFORTS

Apollo takes every opportunity, no matter how big or how small, to improve the environment. On a daily basis, Apollo proudly:

Encourages suppliers to incorporate sustainable packaging

Reuses water as a coolant during the production process and in the laboratory

Uses fleece lamination made of 100% recycled PET bottles

Works with mostly solution-dyed yarn to increase sustainability

Reduces use of plastic in everyday activities with things like reusable and recyclable tableware and water fountains

Uses LED printers to reduce energy consumption

Buys 100% regenerated pallets for shipping and receiving goods

Uses recycled cellulose paper and continues internal printing best practices





# THE PHOTOVOLTAIC SYSTEM

APOLLO

APOLLO USES A PHOTOVOLTAIC SYSTEM OF 108 KWP THAT  
COVERS 4% OF THE ANNUAL ENERGY REQUIREMENT.

## ENVIRONMENTAL EQUIVALENTS ACHIEVED USING RENEWABLE ENERGY

### CAR FOR 34+ YEARS

The pollution an average passenger car emits over 34.78 years

### TV FOR 31,042 DAYS

The energy to operate a TV for 31,042 days

### 825 COMPUTERS A YEAR

The energy to power 824.57 computers for 1 year



**GREENHOUSE GASES AVOIDED**  
BY USING RENEWABLE ENERGY

**CO<sub>2</sub>** CARBON DIOXIDE  
347,836.20LB

**NO<sub>x</sub>** NITROGEN OXIDE  
55.00LB

**SO<sub>2</sub>** SULFUR DIOXIDE  
35.50LB

**CARBON OFFSET**

**157.78 METRIC TONS**

Offsets the equivalent of 33.60 AC

Typically, one acre of pine forest will offset the equivalent of 4.69 metric tons of CO<sub>2</sub>



# SOLUTION-DYED YARN BENEFITS

## ECOLOGICAL BENEFITS

REDUCTION FOR EACH TON OF YARN

- 1 70 m<sup>3</sup> of water
- 2 1.350 kWh of electricity
- 3 0,4 t of fuel
- 4 0,45 t of chemical products
- 5 Water treatment of the water used

## TECHNICAL BENEFITS

- 1 Lower cost than yard dyed
- 2 Better lightfastness
- 3 Major elasticity, less oligomers, better quality
- 4 More environmentally friendly
- 5 Better color continuity

# HIGH-PERFORMANCE VIRGIN POLYMER YARN-DYED

Recycled Polymer Solution-Dyed outperforms Virgin Polymer Solution-Dyed and Virgin Polymer Yarn-Dyed impact on climate change, ozone depletion, water depletion and human toxicity, among other crucial environmental tests.

## ENVIRONMENTAL IMPACT ON:

### CLIMATE CHANGE



### OZONE DEPLETION



### HUMAN TOXICITY



### WATER DEPLETION



### FOSSIL DEPLETION







# A SUSTAINABLE FUTURE FOR APOLLO

## **FUTURE POWER-SAVING PLANS:**

Increase energy production to the photovoltaic systems

Conduct an energy analysis in 2020 to further improve performances

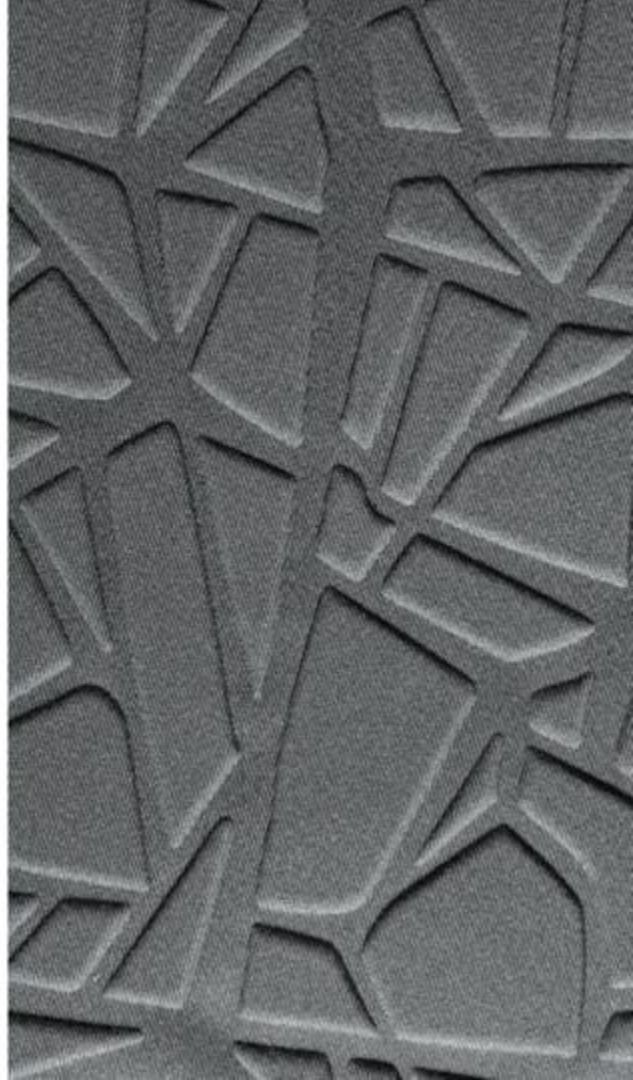
## **PLANS TO REDUCE CARBON FOOTPRINT:**

Introduce Smart Working into the company to allow for less day-by-day travel

Increase online meetings to reduce traveling abroad

Recover leftover yarn on bobbins

Increase recycling of lamination scrap





## SUSTAINABILITY AT MIKO

### A POWER-SAVING POWERHOUSE

- 1 Miko goes off-the-grid as a 1 MWh plant with one-third of energy needs being fueled by photovoltaic panels
- 2 Twenty percent of water is reused during the production process



- 3 Miko monitors energy consumption per production line
- 4 This plant saves power with more insulation and substitution of light with LED lamps

SAGE CREATES SUSTAINABLE PRODUCT

# AWARD-WINNING SUSTAINABILITY PRACTICES

**BEST PRODUCT OF THE YEAR**

AT THE ITALIAN ENVIRONMENTAL BUSINESS AWARDS (PREMIO IMPRESA  
AMBIENTE)

**NATIONAL CHAMPION**

IN THE EUROPEAN BUSINESS AWARDS

ISO 14001  
CERTIFIED

# MIKO'S METHODS



## PRODUCT BEST PRACTICES

Miko considers respect for the environment and sustainable development as strategic factors in the exercise and development of its activities. The organization has adopted a Life Cycle Thinking approach and credible communication of the environmental performance of its products since 2010.

Miko completed a project in 2013 that certified the EPD® Process with the aim of standardizing the method used for the EPD certification of the Dinamica® Auto line to all the company's products. This certification gave Miko the ability to internally handle the management of EPD data involved in the verification procedure by itself and issue new EPDs for registration. This has and will continue to lead to eco-design: products designed to increase the environmental performance of Dinamica®.

All products used for the automotive sector are certified according to the EPD System. In 2019, Dinamica® received the "PETA-Approved Vegan" certification, attributed by PETA to companies that eliminate the use of raw materials of animal origin in the making of their products.





## **CARBON NEUTRALITY COMMITMENT**

In line with its commitment to take care of the environment, Miko has activated a new project to restore and preserve a national forest certified by FSC® to become Carbon Neutral by 2030. For Miko, the 100% compensation is carried out through reforestation and forest improvement interventions that guarantee the capture and conservation of the emissions produced in one year by the company and generate positive and measurable social and environmental impacts. The project is called Bosco Sacile, and it is one of the last ancient forests that preserves the native species of the Friuli region, where Miko is located.

## ORGANIZATION BEST PRACTICES

### SUSTAINABLE DEVELOPMENT GOALS

Miko is committed to contributing to achieving the goals of sustainable development established by the 2030 UN agenda in order to reach a better and more sustainable future at a global level. Today, Miko has achieved the following goals: 1, 5, 7, 8, 9, 12, 13, 15, 16, 17 a/b.

1 NO  
POVERTY



2 ZERO  
HUNGER



3 GOOD HEALTH  
AND WELL-BEING



4 QUALITY  
EDUCATION



5 GENDER  
EQUALITY



6 CLEAN WATER  
AND SANITATION



7 AFFORDABLE AND  
CLEAN ENERGY



8 DECENT WORK AND  
ECONOMIC GROWTH



9 INDUSTRY, INNOVATION  
AND INFRASTRUCTURE



10 REDUCED  
INEQUALITIES



11 SUSTAINABLE CITY  
AND COMMUNITIES



12 RESPONSIBLE  
CONSUMPTION  
AND PRODUCTION



13 CLIMATE  
ACTION



14 LIFE  
BELOW WATER



15 LIFE  
ON LAND



16 PEACE, JUSTICE  
AND STRONG  
INSTITUTIONS



17 PARTNERSHIPS  
FOR THE GOALS





# SUSTAINABILITY IN ASIA



## ASIA

NO. 1 BOGI ROAD, CAIDIAN DISTRICT  
WUHAN 430100, HUBEI PROVINCE, PRC

ISO 14001  
CERTIFIED



## RECYCLING

100% recycling of used packaging  
and materials

12 TONS

WASTE YARN

48 TONS

WASTE SELVAGE

2 TONS

WASTE MINERAL OIL

5.15 TONS

WASTE EMULSION

0.5 TONS

WASTE ACTIVATED  
CARBON

## SAVING

Photovoltaic power generation  
and energy saving per year:

450 KRBM

SAVINGS

1927.8MV

POWER GENERATION  
CAPACITY

## GARBAGE SORTING AND GREENING

Wuhan conducts garbage training for employees to ensure that proper disposal is a top priority. There are 24 waste bins in the facility to help sort waste. With 17 for domestic garbage, 3 for hazardous waste, 2 for medical waste and 2 for kitchen waste, each item is disposed of in a safe and specific way.

In addition to garbage sorting, Wuhan has created a green space for employees to enjoy. The green area of the park has reached 35.5%, with more than 25 kinds of plants and trees, and over 7 species of birds that inhabit the area.



# OUR ASSOCIATES

Sage focuses on the wellness, safety and education of our associates on a global level. We strive to provide the best work environment for our associates. We closely monitor incidents with custom safety stickers that are updated daily by our plant associates and strive for zero workplace injuries.

We offer:

ANNUAL SAFETY TRAINING

ACCESSIBLE PLANT SAFETY RULES & ASSESSMENTS

EDUCATIONAL CURRICULA CENTERED AROUND HEALTH & WELLNESS

COMMITMENT TO ISO STANDARDS AND COMPLIANCE POLICIES

SAGE CREATES SUSTAINABLE MISSION





# GLOBAL RECOGNITION

We are recognized by the industry's leading organizations as a green partner with superior corporate responsibility.

## AWARDS:

ISO 9001 & ISO/IATF 16949 Quality Management Standards

DHEC Smart Business Recycling Program Award

SCMA Safety Performance Recognition Award

IATF 16949 Certification

OEKO-TEX® Standard 100 class I

2018/2019 REPREEVE® Champions of Sustainability Award: 200+ Million Bottle Award





# ENVIRONMENTAL POLICY

## A LETTER FROM OUR CEO



SAGE CREATES SUSTAINABLE MISSION

*Maintaining our environment is fundamental to our operations at Sage Automotive Interiors. We will operate our plants and facilities in complete compliance with all applicable environmental regulations and other requirements to which Sage Automotive Interiors subscribes. We will operate in a manner that protects the quality of our environment as well as the health and safety of our associates and the public.*

*Our efforts toward maintaining our environment will be tangible and evident in our daily activities. Specifically, Sage Automotive Interiors will:*

**USE ENERGY EFFICIENTLY** TO CONSERVE NATURAL RESOURCES

**CONSERVE NATURAL RESOURCES** BY REDUCING, REUSING AND RECYCLING MATERIALS

**MINIMIZE THE EMISSIONS** THAT CONTRIBUTE TO CLIMATE CHANGE

REGULARLY REVIEW **ENVIRONMENTAL OBJECTIVES** AND PERFORMANCE





# ENVIRONMENTAL POLICY



SAGE CREATES  
SUSTAINABLE  
MISSION

**ENCOURAGE** OUR FAMILIES, OUR ASSOCIATES AND OUR COMMUNITIES TO CONSERVE OUR NATURAL RESOURCES AND

**PROTECT** THE ENVIRONMENT IN OUR DAILY LIVES

COOPERATE AND **DEVELOP LIAISONS** WITH THE COMMUNITY, SUPPLIERS, CUSTOMERS, GOVERNMENT AGENCIES AND OTHER ORGANIZATIONS ENGAGED IN IMPROVING THE ENVIRONMENT

*Through all our environmental activities, Sage Automotive Interiors is devoted to continual improvement through the development of ideas, technologies and programs that address the environmental cost and impact of our activities, products and services.*

**Dirk Pieper**

*CEO – Sage Automotive Interiors*

*Original–September 5, 2009*

*Revised–January 8, 2013*

*Revised–April 9, 2014*

## PROACTIVE COMMUNITY OUTREACH PROGRAMS:

Volunteerism & Philanthropic Event  
Participation

Local Trade Associations

Deep involvement with our community  
shows our commitment.

## ENVIRONMENTAL STEWARDSHIP

Recycling Participation & Training

Emergency Response Teams

ISO Certifications

**GAYLEY'S** employees assist with **A Ride to Remember** for the Alzheimer's Association, Foothills Family Resources and Upstate Wounded Warriors.

**APOLLO** collects lids of plastic bottles (water, milk, fruit juice detergent, etc.) to be part of «**RACCOLTATAPPI**», an initiative from the foundation **FMS Onlus** which improves the possibilities and lifestyles of people who are dealing with blood illnesses.



# THE FUTURE

Sage constantly seeks alternative methods and audacious goals to minimize our environmental footprint and create a positive impact on our communities. After all, transformational sustainability needs to support future generations as well as today's people and planet.

Innovative initiatives such as this will ensure proper environmental stewardship practices are pursued and implemented. Because at Sage, we will not seek growth that does not support sustainability.

**AN EXAMPLE IS OUR PREMIUM DINAMICA® PRODUCT LINE. WHILE ALREADY  
100% RECYCLABLE AT ITS END OF LIFE, MIKO HAS RECEIVED A CORPORATE  
MANDATE TO BECOME CARBON NEUTRAL BY 2030.**

We are off to a strong start, but there is always more work to be done when it comes to protecting our environment. We will continue to expand our efforts within our organization and hold the rest of our industry to the same standards. We thank you for your role in our progress and for the continued support. It is our passion and purpose to provide earth-friendly alternatives, recyclable options and customized interior aesthetics for you. Together, a sustainable future is within reach.

We are excited about the future, and we take an onus upon ourselves to ensure that our impact upon the world is a positive one.

SAGE CREATES SUSTAINABLE MISSION







SAGE AUTOMOTIVE INTERIORS

3 RESEARCH DR #300, GREENVILLE, SC 29607

